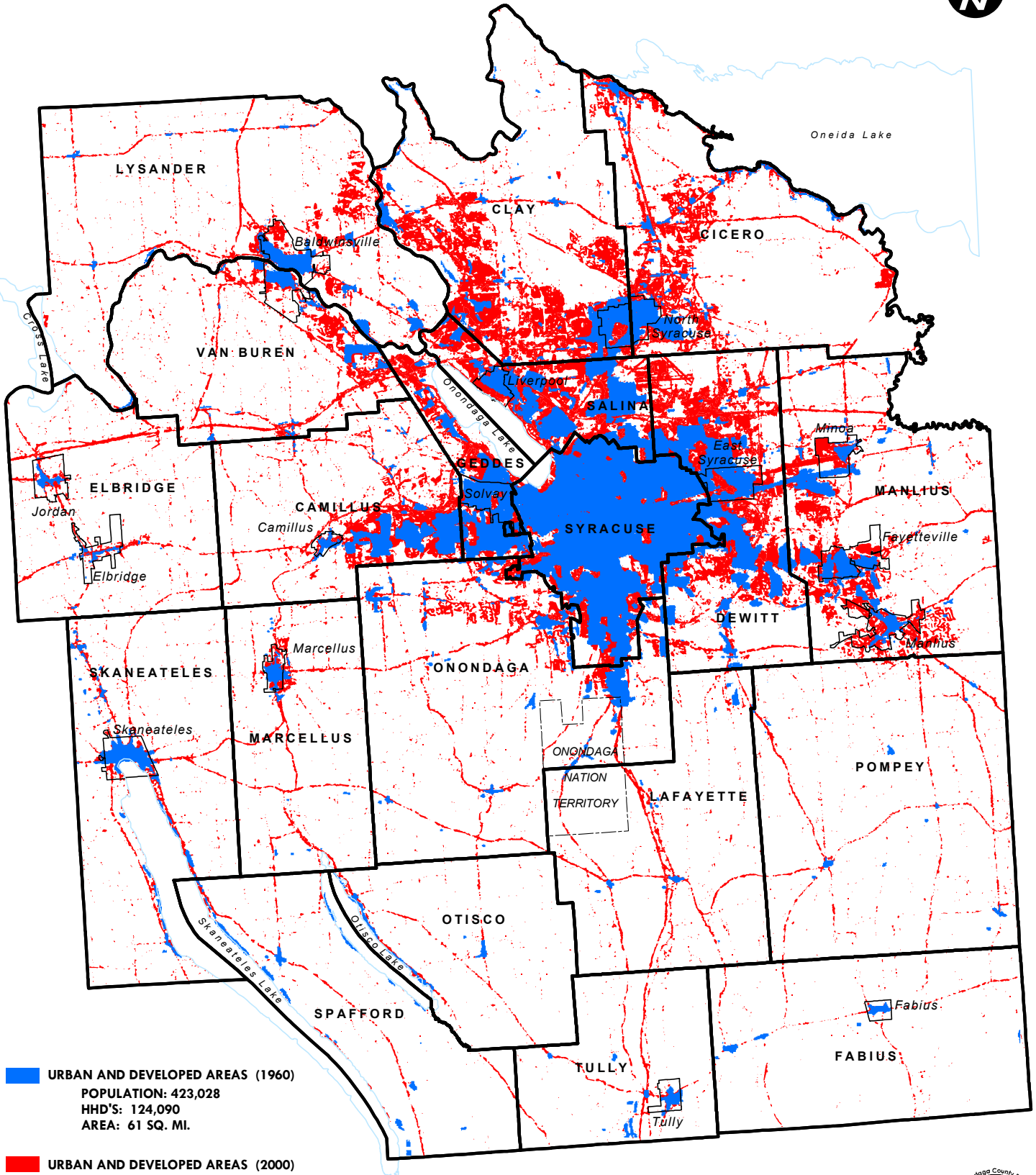


URBAN DEVELOPMENT IN ONONDAGA COUNTY 1960 - 2000



URBAN AND DEVELOPED AREAS (1960)
 POPULATION: 423,028
 HDD'S: 124,090
 AREA: 61 SQ. MI.

URBAN AND DEVELOPED AREAS (2000)
 POPULATION: 458,336
 HDD'S: 181,153
 AREA: 122 SQ. MI.

Data Sources:
 County Plan Summary, Onondaga County Department of Planning, November 1, 1962.
 NOAA Coastal Services Center/Coastal Change Analysis Program(C-CAP), 2001.
 U.S. Census Data, 1960 & 2000.

